

PE-10665

I REQUIRE THIS PLAN TO BE DEPOSITED UNDER THE LAND TITLES ACT

DATE FEBRUARY 4, 2013

ALEX MARTON
ONTARIO LAND SURVEYOR

PLAN 66R-

RECEIVED AND DEPOSITED

DATE

REPRESENTATIVE FOR LAND REGISTRAR FOR THE LAND TITLES DIVISION OF CITY OF TORONTO (No. 66)

SCHEDULE

PART	PART OF BLOCK	REGISTERED PLAN	ALL OF PIN
1			
2	D	M-107	21148-0036 (LT)
3			

PLAN OF SURVEY OF PART OF BLOCK D REGISTERED PLAN M-107 CITY OF TORONTO

SCALE 1 : 150



ALEX MARTON LIMITED, O.L.S.

METRIC

DISTANCES SHOWN ON THIS PLAN ARE IN METRES AND CAN BE CONVERTED TO FEET BY DIVIDING BY 0.3048

LEGEND

■	DENOTES	SURVEY MONUMENT FOUND
□	"	SURVEY MONUMENT PLANTED
WIT	"	WITNESS MONUMENT
SIB	"	STANDARD IRON BAR
SSIB	"	SHORT STANDARD IRON BAR
IB	"	IRON BAR
CC	"	CUT CROSS
N,S,E,W	"	NORTH, SOUTH, EAST, WEST
OU	"	ORIGIN UNKNOWN
1222	"	C.E. DOTTERILL L.T.D., O.L.S.
CTS	"	CITY OF TORONTO SURVEY DIVISION
1715	"	ROWAN-STANCIU L.T.D., O.L.S.
YY	"	YATES & YATES L.T.D., O.L.S.
PIN	"	PROPERTY IDENTIFIER NUMBER
MEAS	"	MEASURED
P1	"	PLAN R-1886
P2	"	PLAN 66R-23443
P3	"	PLAN 66R-15180
P4	"	SURVEYOR'S REAL PROPERTY REPORT BY YOUNG & YONG SURVEYING INC., DATED MAY 7, 2001
PROD'N	"	PRODUCTION

SURVEYOR'S CERTIFICATE

I CERTIFY THAT :

1. THIS SURVEY AND PLAN ARE CORRECT AND IN ACCORDANCE WITH THE SURVEYS ACT, THE SURVEYORS ACT, THE LAND TITLES ACT AND THE REGULATIONS MADE UNDER THEM.
2. THE SURVEY WAS COMPLETED ON JANUARY 8, 2013

FEBRUARY 4, 2013

DATE

ALEX MARTON
ONTARIO LAND SURVEYOR

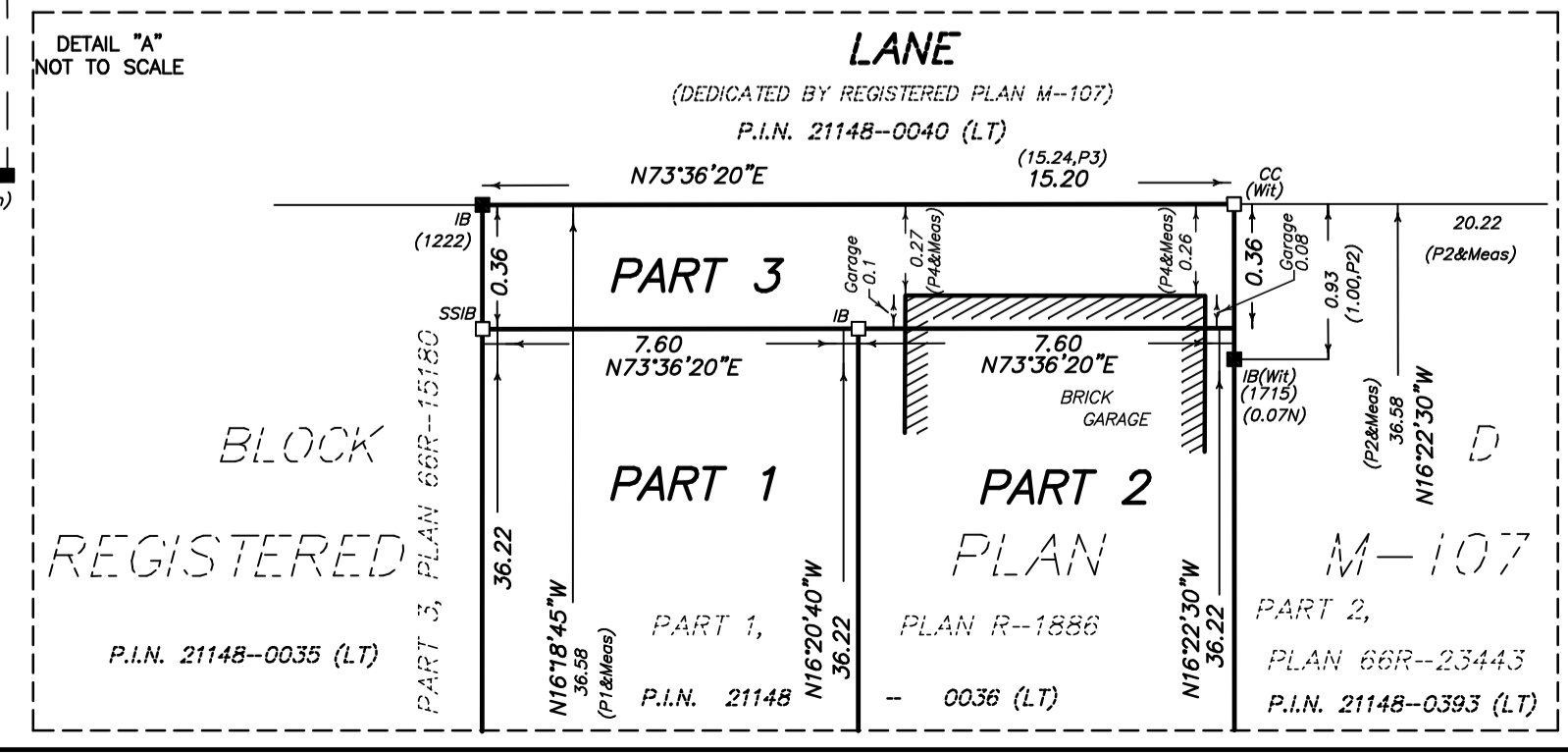
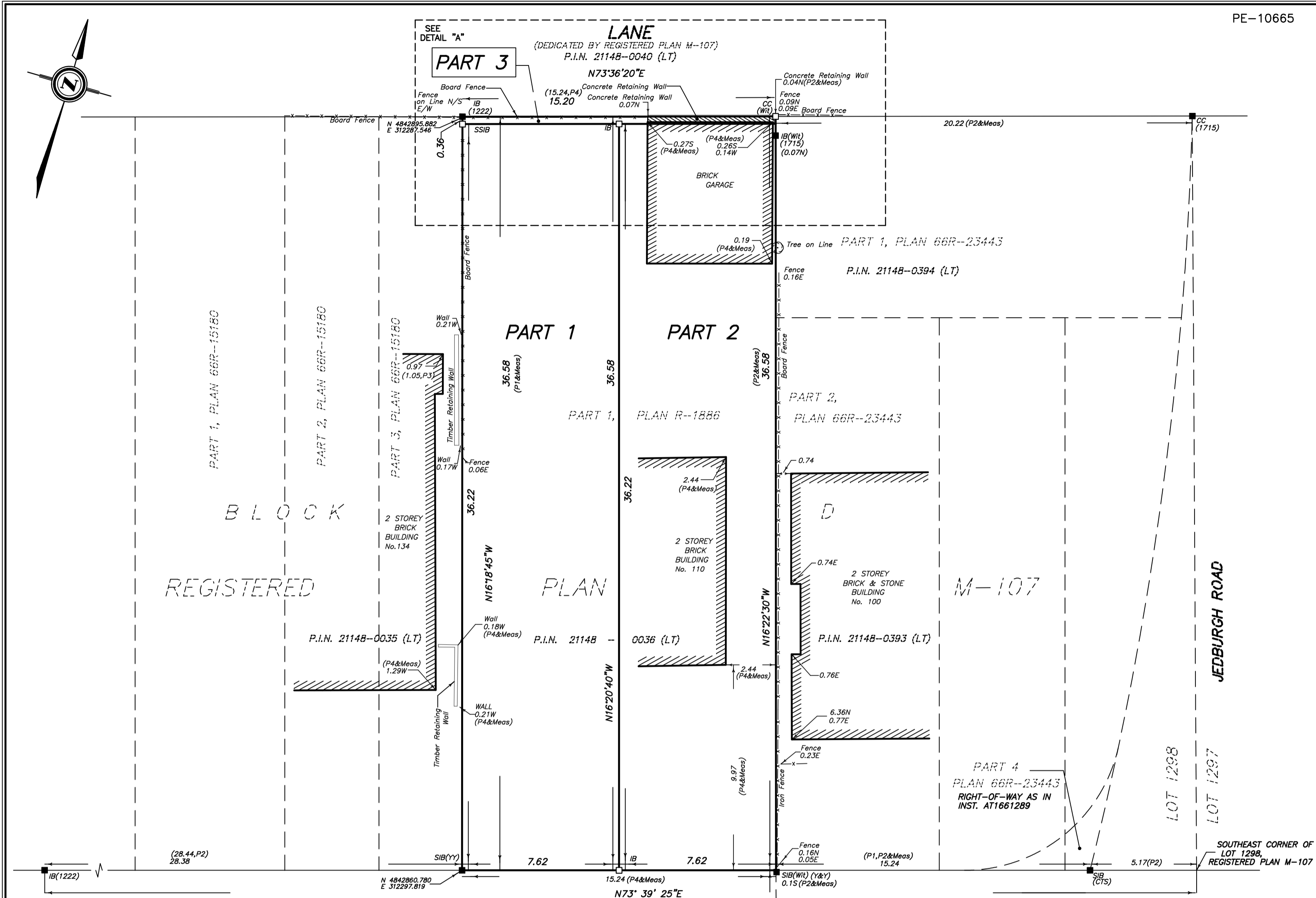
BEARING NOTE

BEARINGS ARE MTM GRID BEARINGS, DERIVED FROM SPECIFIED CONTROL POINTS 02020060049 AND 02219741877, MTM ZONE 10, CENTRAL MERIDIAN 79°30'W LONGITUDE (NAD-1983:ORIG).

POINT ID	NORTHING	EASTING
HCM 02020060049	4842958.988	312601.030
HCM 02219741877	4842769.182	312038.685

COORDINATES CANNOT, IN THEMSELVES, BE USED TO RE-ESTABLISH CORNERS OR BOUNDARIES SHOWN ON THIS PLAN.

DISTANCES ARE GROUND AND CAN BE CONVERTED TO GRID BY MULTIPLYING BY THE COMBINED SCALE FACTOR OF 0.99933108



ALEX MARTON LIMITED
ONTARIO LAND SURVEYORS
160 APPLEWOOD CRESCENT, UNIT 22,
CONCORD, ONTARIO, L4K 4H2
PHONE: 905-879-9889 FAX: 905-879-0770
E-MAIL: alex@amsurveying.ca
WEBSITE: www.amsurveying.ca

DRAWN : I.K.	FILE NAME: 2012-001_RPLAN.DWG
CHECKED : A.M.	PLOT SCALE: 1:150
PROJECT No. 2012-001	PLOTTED: FEBRUARY 27, 2012