

TOPOGRAPHIC PLAN OF
PART OF BLOCK G
REGISTERED PLAN M-172
CITY OF TORONTO
(FORMERLY CITY OF SCARBOROUGH)
SCALE 1 : 300

ALEX MARTON LIMITED
ONTARIO LAND SURVEYORS
© COPYRIGHT 2011

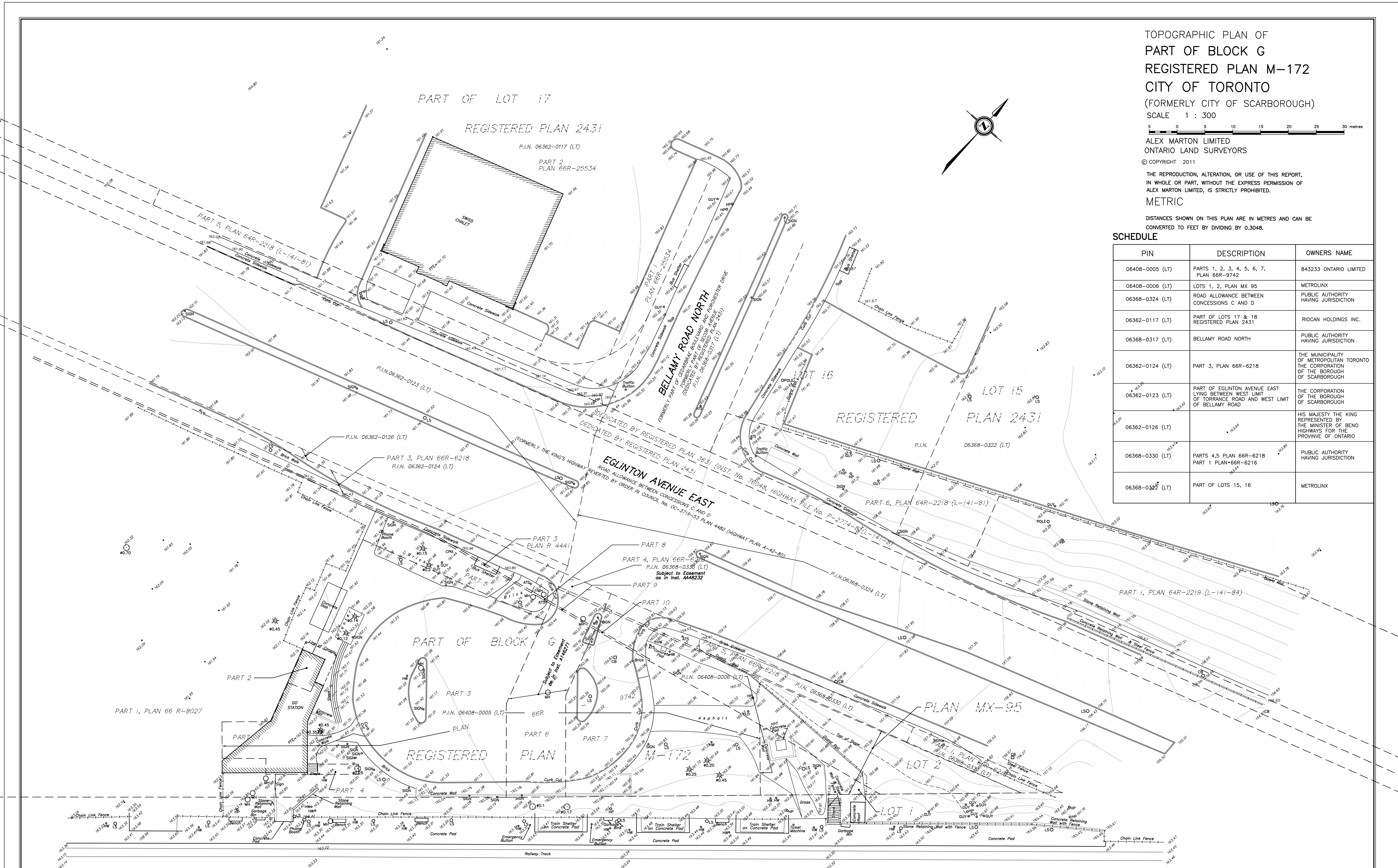
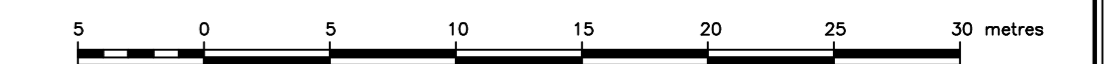
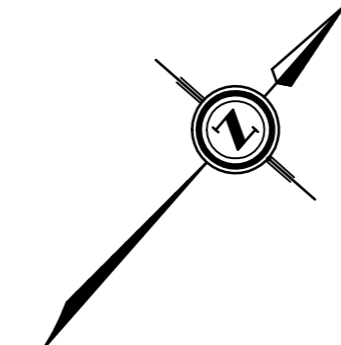
THE REPRODUCTION, ALTERATION, OR USE OF THIS REPORT,
IN WHOLE OR PART, WITHOUT THE EXPRESS PERMISSION OF
ALEX MARTON LIMITED, IS STRICTLY PROHIBITED.

METRIC

DISTANCES SHOWN ON THIS PLAN ARE IN METRES AND CAN BE
CONVERTED TO FEET BY DIVIDING BY 0.3048.

SCHEDULE

PIN	DESCRIPTION	OWNERS NAME
06408-0005 (LT)	PARTS 1, 2, 3, 4, 5, 6, 7, PLAN 66R-9742	843233 ONTARIO LIMITED
06408-0006 (LT)	LOTS 1, 2, PLAN MX 95	METROLINX
06368-0324 (LT)	ROAD ALLOWANCE BETWEEN CONCESSIONS C AND D	PUBLIC AUTHORITY HAVING JURISDICTION
06362-0117 (LT)	PART OF LOTS 17 & 18 REGISTERED PLAN 2431	RIOCAN HOLDINGS INC.
06368-0317 (LT)	BELLAMY ROAD NORTH	PUBLIC AUTHORITY HAVING JURISDICTION
06362-0124 (LT)	PART 3, PLAN 66R-6218	THE MUNICIPALITY OF METROPOLITAN TORONTO THE CORPORATION OF THE BOROUGH OF SCARBOROUGH
06362-0123 (LT)	PART OF EGLINTON AVENUE EAST LYING BETWEEN WEST LIMIT OF TORRANCE ROAD AND WEST LIMIT OF BELLAMY ROAD	THE CORPORATION OF THE BOROUGH OF SCARBOROUGH
06362-0126 (LT)		HIS MAJESTY THE KING REPRESENTED BY THE MINISTER OF BENO HIGHWAYS FOR THE PROVINCE OF ONTARIO
06368-0330 (LT)	PARTS 4,5 PLAN 66R-6218 PART 1 PLAN 66R-6216	PUBLIC AUTHORITY HAVING JURISDICTION
06368-0322 (LT)	PART OF LOTS 15, 16	METROLINX



BENCHMARK NOTE
ELEVATIONS SHOWN HEREON ARE GEODETIC AND ARE REFERRED
TO THE CITY OF TORONTO BENCHMARK No.12020040040
(ALSO KNOWN AS 040040) HAVING AN ELEVATION OF 161.899 METRES.
BENCH MARK LOCATED ON 2995 EGLINTON AVENUE EAST, GO STATION
PARKING LOT, ON THE SOUTH SIDE OF EGLINTON AVENUE EAST,
OPPOSITE BELLAMY ROAD. BENCH MARK IN CENTER OF NORTH FACE OF
EAST END OF CONCRETE RETAINING WALL AND 0.32 METRES ABOVE
GROUND LEVEL.

NOTE
BOUNDARY INFORMATION SHOWN HEREON WAS COMPILED FROM
SURVEY AND REGISTRY OFFICE RECORDS AND HAS NOT BEEN
VERIFIED IN THE FIELD.

- LEGEND**
- MH DENOTES MANHOLE
 - CB - CATCH BASIN
 - HP - HYDRO POLE
 - LS - LIGHT STANDARD
 - WV - WATER VALVE
 - ATS - AUTOMATIC TRAFFIC SIGNAL
 - CP - CONCRETE POLE
 - HYT - HYDRO TRANSFORMER
 - FEE - FINISHED FLOOR ELEVATION
 - HW - HAND WELL
 - - DECIDUOUS TREE
 - - CONIFEROUS TREE
 - ★ - ELEVATION ON THE GROUND
 - ★ - ELEVATION ON THE TOP OF WALL

SURVEYOR'S CERTIFICATE
I CERTIFY THAT:
THE FIELD OBSERVATIONS REPRESENTED ON THIS PLAN
WERE COMPLETED ON THE 2 DAY OF NOVEMBER, 2011
DATE
ALEX MARTON
ONTARIO LAND SURVEYOR

CAUTION
THIS IS NOT A PLAN OF SURVEY AND SHALL NOT BE
USED FOR MORTGAGE OR TRANSACTION PURPOSES.

ALEX MARTON LIMITED
ONTARIO LAND SURVEYORS
180 APPLEWOOD CRESCENT, UNIT 28, CONCORD, ONTARIO, L4K 4H2
PHONE: 905-878-8889 FAX: 905-878-0770
E-MAIL: alex@amsurveying.ca
WEBSITE: amsurveying.ca

PROJECT No.
2011-049
DRAWN: LK CHECKED: JLM
Acad File No. 2011-49.DWG